



Deswik.MDM

Mining Data Management

A spatial database and process
workflow management tool



Experience the Deswik advantage

We empower mining teams to work smarter and faster. Our integrated approach to mine planning incorporates design and scheduling features across our core platform to help our clients increase efficiency and optimize outcomes.



Deswik.Spatial

Design & Solids
Modeling



Deswik.Planning

Gantt Chart
Scheduling



Deswik.OPS

Operations Planning
& Control



Deswik.GeoTools

Operational
Geology



Deswik.MDM

Data Management
& Governance



Deswik.BOLT

Surface Mining & Value
Chain Optimizer

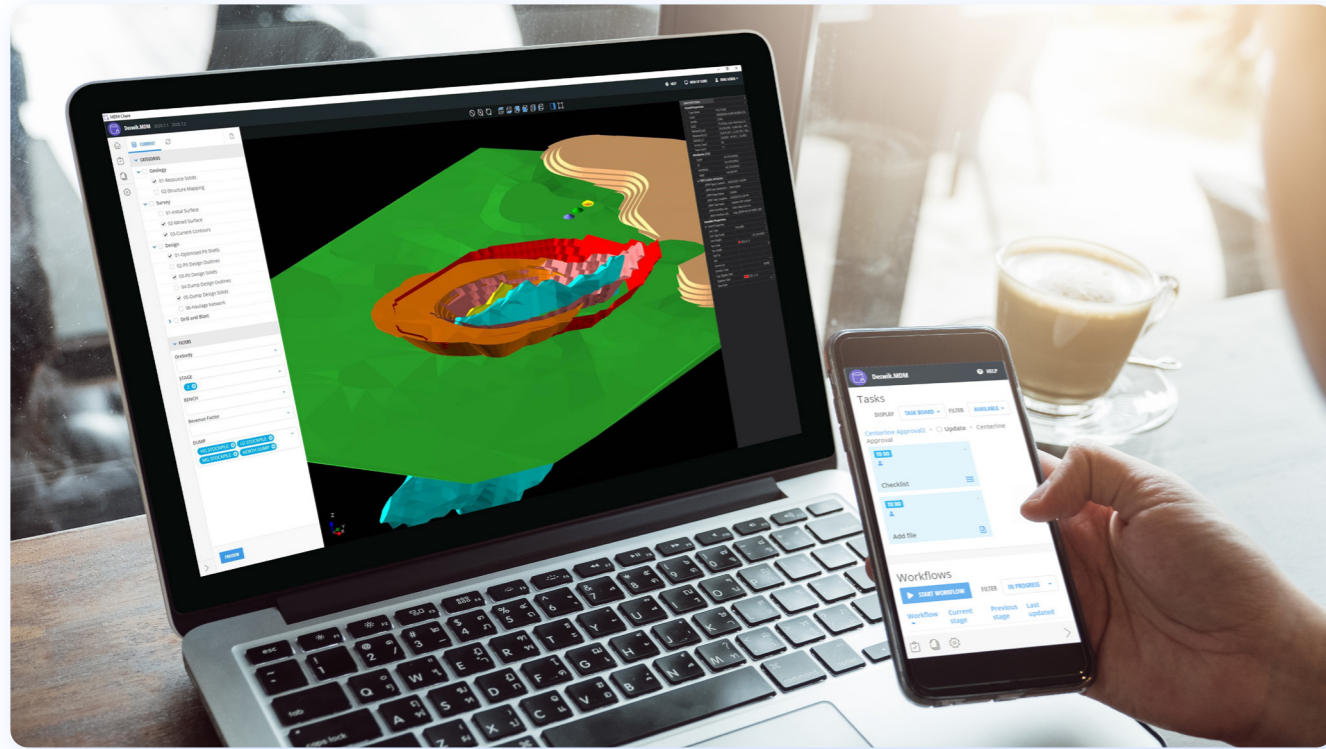
Workflow-driven management of mining data



Connecting the planning value chain

Integrated with Deswik.CAD, Deswik.MDM provides a spatial database, stand-alone viewer, and process workflow management tool for the entire technical services department. A single solution for spatial data security and management, Deswik.MDM supports versioning and auditing.

Built using modern web-based approaches, the system lets you organize and categorize typical mining data and documents from all departments. Data is tagged using attributes and edited through user-definable, auditable workflows. File management for any type of file and basic workflow tasks including approvals are available from any modern web browser. A standalone application with 3D preview window enables communication across a site.



Mining Data Management

One version of the truth held in central data storage

- Management of mining data and associated documents using multiple data stores and workflows:
 - Mining data: e.g. block models, grid models, polylines, surfaces, solids, and schedules.
 - Associated data: e.g. PDF, Excel files etc. can be stored in the file management section of Deswik MDM and linked to spatial entities or attached to workflows.
- Data is split into configurable, logical categories to provide ease of access and visibility to the organization.
- Attributes (metadata) are stored against all data to provide meaning and context.
- Enforces site planning processes using workflow control and electronic approvals.
- Simplifies the number of site systems and through integration provides access to data stored in external databases.
- Provides data for reporting on planning information and workflow progress.
- Audit trail of all changes, backups and versioning.
- Provide access to data for users located remote from a mine site.

Governance

Risk management and quality control

- Implement risk controls to manage critical data and workflows.
- Simplify, streamline and automate planning and approvals:
 - Streamlines and records approvals.
 - Data visibility of approved data can be controlled.
 - All plans must pass through business planning tollgates.
 - Electronic workflows to implement approved business processes.

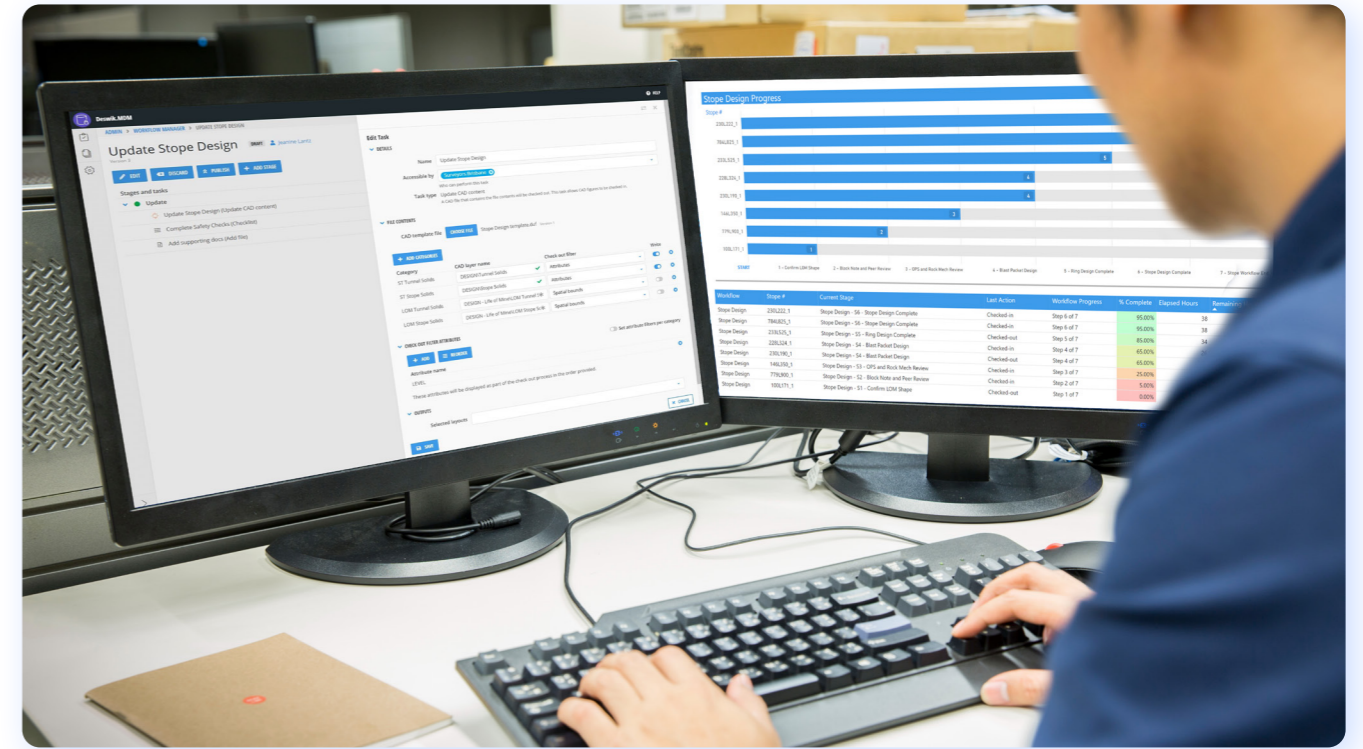
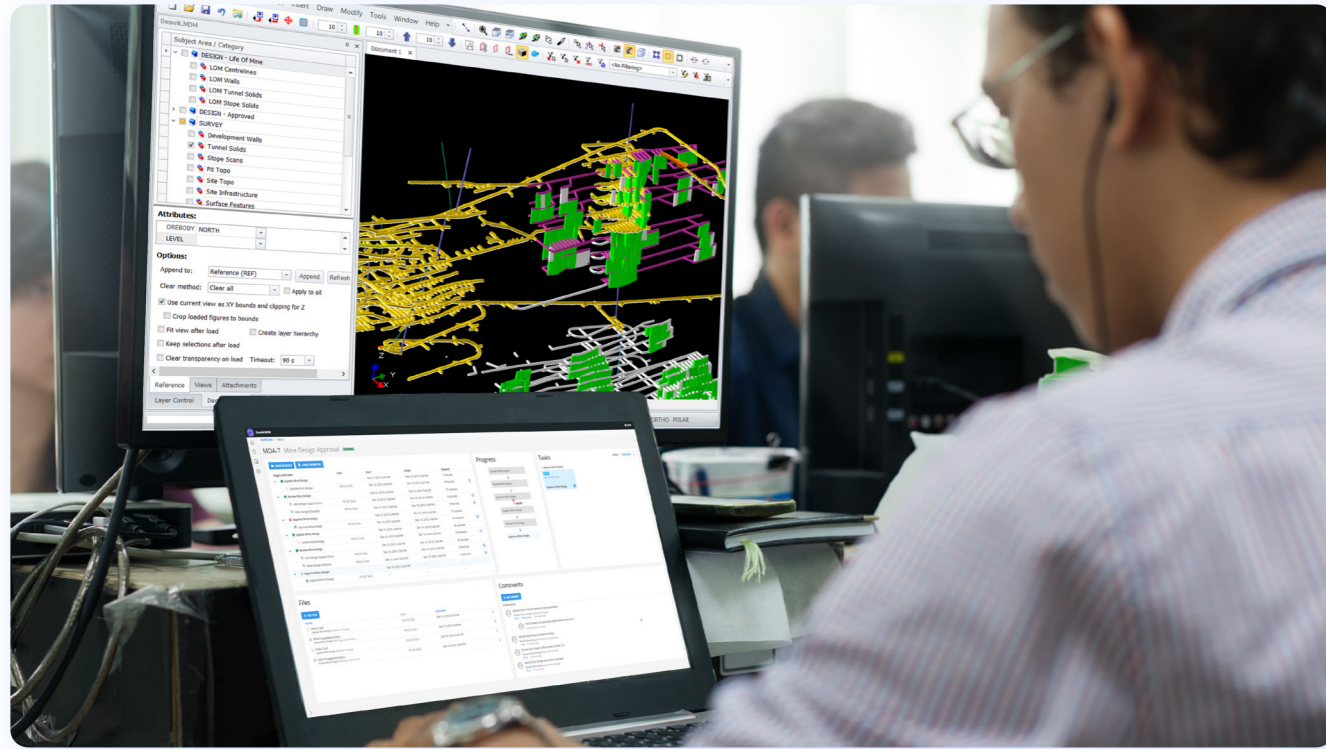


Process Management

Actively manage complex processes and technical workloads to improve productivity

- Workflows can be created to manage planning processes. Workflows provide formalized, repeatable processes that ensure data validity and auditability.
- Superintendents and managers can view outstanding workflow items across departments and re-allocate tasks to balance workloads.
- Transition draft designs to groups of users, through a controlled workflow process before being visible to all users in an organization.
- Reduce system maintenance through centralized data and template configuration.
- Minimize training of new staff as workflows are easily repeatable and can simplify complex processes.

“Capture and store associated documents or metadata during the process of completing a workflow.”



Access and Control

Sharing relevant data with those who need it

- Integrated with planning environment: directly import or reference data into Deswik.CAD.
 - Validation occurs on committing changes.
 - When data is checked-in, email notifications can be sent to groups of users.
- Accessible across site:
 - Stand-alone dashboard provides overview of spatial data, and associated documents to anyone on site.
 - Only approved plans are visible in the database, while plans under construction are not.
- Access just the required data using attribute or spatial filters.
- Group permissions maintain data integrity:
 - Permissions govern users' rights to access the data and workflows.
 - Deswik.IMS (Identity Management System) provides user authentication via integration with Microsoft Active Directory.
- Check-in / check-out:
 - Extract portions of data for editing and then merge back into the entire dataset.
 - Data is locked for editing purposes by other users during checkout to ensure a single version of the truth is maintained.
 - The latest published versions of the data are still available for read-only, reference purposes.
- Data security:
 - Users are assigned rights to only allow read or write access to specific categories of data.
 - Users can be grouped to allow multiple people to work on common tasks as available.
- Approval authority can be delegated between users to support variable availability and dynamic role changes.
- The Deswik.MDM SiteView module provides a site configurable way of displaying digital level or bench plans containing the latest approved data to end users (available separately).

Reporting and Analytics

Turn data into knowledge

- All data stored in Deswik.MDM can be made visible via API's for reporting solutions.
- Present report data to third-party data warehouses for dashboard reporting, such as Microsoft PowerBI.
- Manage your team's productivity:
 - Deswik.MDM reports detail of all workflow actions including time taken for completion per task.
 - Monitor task progress and allocate work to available team members.

“A spatial database and process workflow management tool.”

About Deswik

Leveraging decades of professional software development experience and a proven history of building technical mining applications, Deswik provides industry-leading tools to ensure that mine plans are robust, transparent and achievable.

Our software is developed to take advantage of the latest high performance technologies and cutting-edge computing algorithms, all accessed through a flexible, intuitive interface.

By avoiding the legacy issues faced by other older packages, coupled with our outstanding customer support, we provide complete solutions to meet the demands of modern mining. Deswik is committed to delivering comprehensive tools and quality support for all mining sectors.